

# Helping Mothers and Babies Survive Threatened Preterm Birth (PTB) Care

## ACTION PLAN

Within 15 min



**Assess woman's condition and start care**

**Use this Action Plan only in facilities able to provide:**

- accurate gestational age assessment
- accurate diagnosis of conditions leading to PTB
- rapid identification and treatment of maternal infection
- adequate PT newborn care, including: resuscitation, thermal care, feeding support, infection treatment, and safe oxygen use

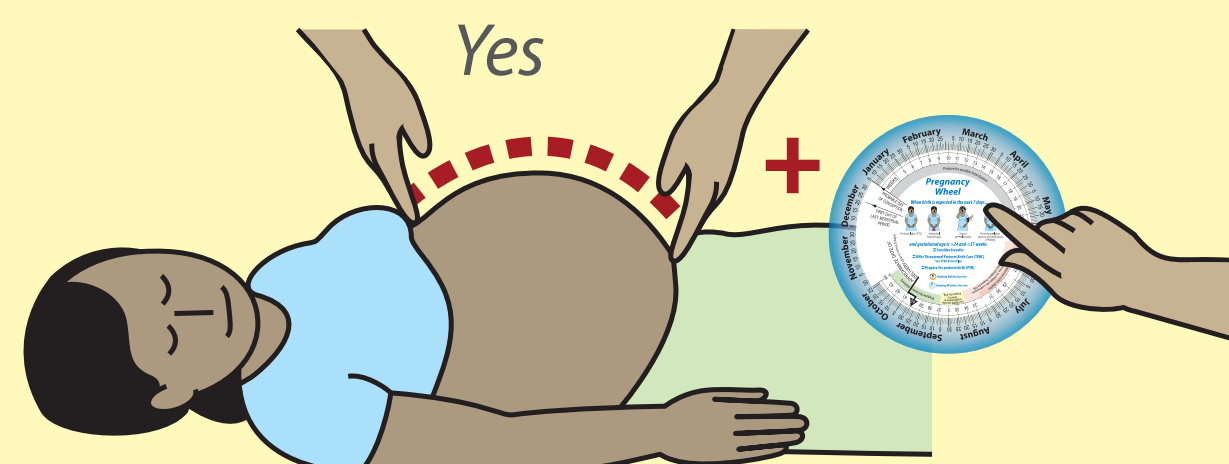
Not stable  
**Stabilize;  
consider  
delivery**

Stable



**Fetal heart tones?**

No  
**Deliver**



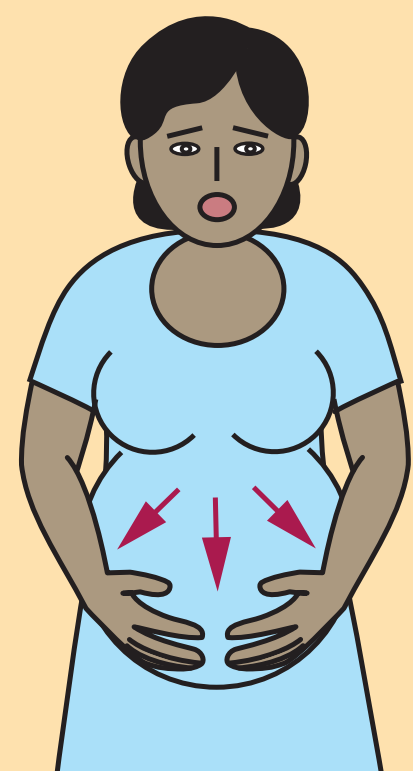
**Estimate gestational age**

Within 30 min

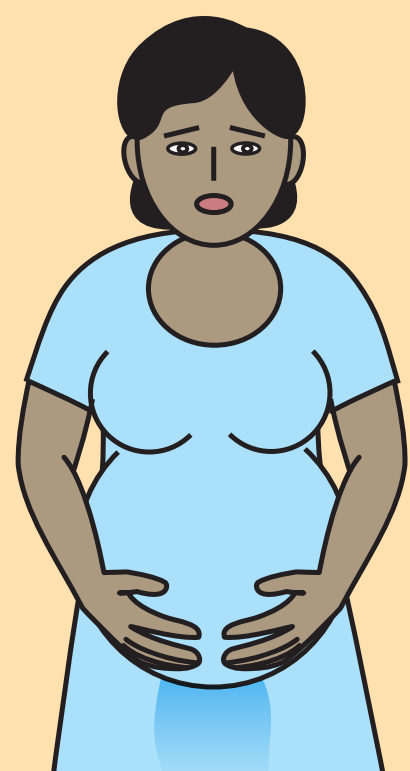
< 37 weeks

≥ 37 weeks

**Condition with high risk of PTB in next 7 days**



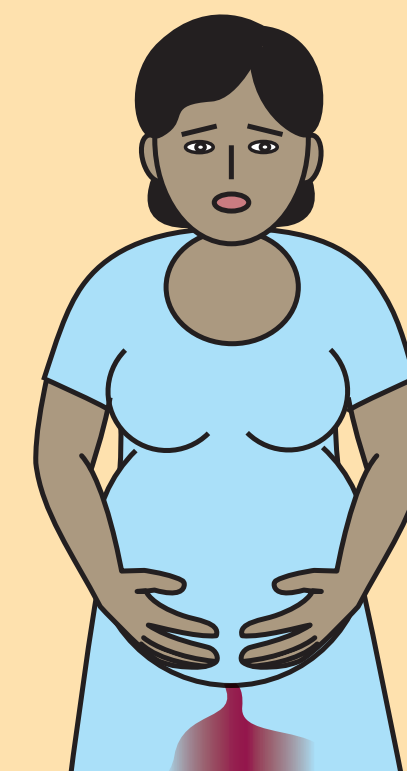
Preterm labor (PTL)



Preterm pre-labor rupture of membranes (PPROM)



Severe pre-eclampsia



Antenatal hemorrhage



**Monitor mother and fetus; continue maternal care**



**Counsel woman on PTB care options**

24 < 32 weeks  
If delivery expected within 24 hours

**Offer MgSO<sub>4</sub>**

24 < 34 weeks

34 < 37 weeks

+  
For PTL

**Consider nifedipine**

If given dexamethasone and if not given MgSO<sub>4</sub>

+  
For PPROM

**erythromycin**

+  
For severe pre-eclampsia

**Continue MgSO<sub>4</sub>**

See HMS PE/E module

+  
For antenatal hemorrhage

**Determine cause and manage hemorrhage**

For PPROM

**Consider erythromycin or delivery**

Within 1 hr

**Monitor frequently**  
Mother and fetus stable?

Stable

**Ensure follow-up doses**

**Prepare for PTB**

See HBS Essential Care for Small Babies

**Monitor outcomes to improve care**

Not Stable  
**Stabilize;  
consider  
delivery**

Follow protocol for continuing care